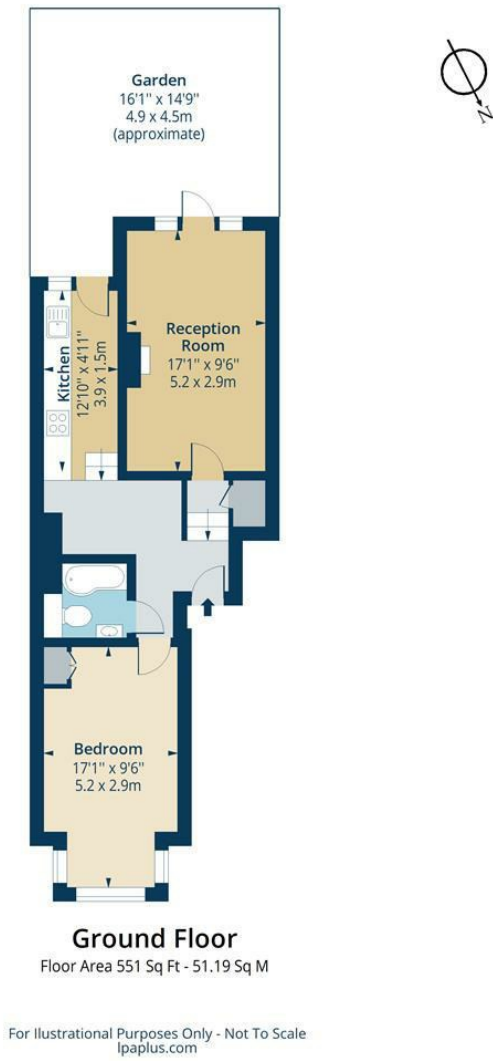


Craysfort Road, N16  
Approx. Gross Internal Area 551 Sq Ft - 51.19 Sq M



Whilst every attempt has been made to ensure the accuracy of the floor plan contained here, measurements of doors, windows, rooms and any other items are approximate and no responsibility is taken for any error, omission or mis-statement. This plan is for illustrative purposes only and should be used as such by any prospective purchaser. The services, systems and appliances shown have not been tested and no guarantee as to their operability or efficiency can be given.



While we endeavor to make our sales details accurate and reliable, if there is any point which is of particular importance to you, please contact the office and we will be pleased to confirm the position for you. Particularly if contemplating traveling some distance to view the property. All room sizes have been measured with an electronic sonic tape, the accuracy of which cannot be guaranteed. You are advised to make your own checks before contemplating a purchase, especially if an exact measurement is of particular importance to you.



## Craysfort Road, N16



**£2,000 Per Month**

Oakwood are pleased to present this lovely one-bedroom garden flat on Craysfort Road, right in the heart of Stoke Newington. Just a short walk from Clissold Park and Church Street, with its great selection of cafés, bars, and shops, this flat is in a fantastic location.

Full of character, the property retains some beautiful original features and has a bright, south-facing garden—perfect for relaxing or entertaining.

Don't miss out—call now to arrange a viewing!

[oakwoodestateagents.com](http://oakwoodestateagents.com)

48 Stoke Newington Church Street  
London N16 0NB  
Company No. 2995463, Oakwood Estate Agents Limited T/A Oakwood

Tel 020 7249 1000  
Fax 020 7249 2000  
[www.oakwoodestateagents.com](http://www.oakwoodestateagents.com)





• Private Garden

• Original Features

